

Intensive Ag Conference

BEEF – PORK – POULTRY

DALBY

February 28 – March 1, 2018

CONFERENCE PROGRAM



CONFERENCE PARTNERS



LUNCH SPONSOR



COFFEE CART SPONSOR



INTENSIVE AG INDUSTRIES CONFERENCE BEEF, PORK AND POULTRY INDUSTRIES

On behalf of Food Leaders Australia (FLA), the broader TSBE team and our event partners, I'm delighted to welcome you to the inaugural Intensive Ag Industries Conference, focusing on the animal industries.

Throughout the Western Downs, and the Southern Queensland region, the intensive animal industries are a key driver of employment and economic growth.

They complement the large grain growing sector and provide a diversity of markets for the broad acre production systems in and around our region.

We should be rightly proud of our position as the nation's largest intensive animal region, accounting for: 170 registered cattle feedlots, with an operating capacity of 915,000 SCU's; two million meat poultry birds, 78.6 million eggs produced annually; and 120 registered piggeries caring for 430,000 pigs.

Together they account for \$1.7b in gross economic value, which represents 45% of the region's total agricultural contribution.

This conference is the first of its kind to bring together the three sectors, with the aim to drive collaboration on common themes and share knowledge across all sectors for everyone's benefit.

This timely conference features key industry players, global thought leaders, local input suppliers and government departments all presenting valuable information on topics to assist participants capitalise on the opportunities arising in the sector.

Yours faithfully,

Bruce McConnel,
General Manager,
Food Leaders Australia



CONFERENCE PARTNERS



LUNCH SPONSOR



COFFEE CART SPONSOR



PROGRAM

WEDNESDAY, 28 FEBRUARY 2018 – CONFERENCE – DALBY SHOWGROUNDS PAVILION, DALBY

CONFERENCE OPEN

9:00am	Registration
9:30am	Welcome Bruce McConnel , General Manager, Food Leaders Australia
9:45am	Mayoral Welcome Cr Paul McVeigh , Mayor, Western Downs Regional Council
10:00am	Collaborate to Succeed Travis Tobin , Chief Executive Officer, Queensland Farmers' Federation
10:30am	Morning Tea
11:00am	Local Government Planning- Water, Infrastructure and Transport Ross Musgrove , Chief Executive Officer, Western Downs Regional Council Jodie Taylor , Community & Liveability General Manager, Western Downs Regional Council
11:50am	Social license to operate – Where are we heading? Ian McConnel , Global Commodity Lead – Beef, WWF
12:20pm	Waste Management Panel Discussion - Making Profit from Waste Dr Bernadette McCabe , Principal Scientist, University of Southern Queensland Dr Peter Watts , Principal Agricultural Engineer, Premise
12:50pm	Lunch
1:30pm	Expert Panel - World Leading Solutions From Local Businesses Aleacia Olm , Sector Leader Major Projects (Agriculture Civil) Geoff Marsh , Director - Business Development, March IT Tim Ford , Managing Director, Feed Central
3:00pm	Afternoon Tea
3:30pm	Service Agencies Panel - Working with Industry to Drive Success Jenelle Choice , Director of Training - Darling Downs and South West Region, Department of Employment, Small Business and Training Andrew Chamberlin , Project Manager, Queensland Farmers' Federation Elton Miller , Executive Director, Department of Agriculture and Fisheries Stacey Kirkwood , Customer Advisor, WorkCover Queensland
4:40pm	Vote of thanks
4:50pm	Conference wrap-up Bruce McConnel , General Manager, Food Leaders Australia
5:00pm	Twilight dinner event start
8:30pm	Event Close

THURSDAY, 1 MARCH 2018 – SITE TOURS DALBY - MEET AT THOMAS JACK PARK, DRAYTON STREET

9:00am - 12:00pm	Board bus and depart to location Sandalwood Feedlot: Sandalwood Feedlot are a 15,000SCU Feedlot north of Dalby. They are regarded as an industry leader who have often been at the forefront of implementing new and innovative cattle feeding technology and cattle management systems. The tour is also an opportunity to view recently installed March IT highspeed connectivity infrastructure on site
------------------	---

SPEAKERS



Bruce McConnel

General Manager Food Leaders Australia

Bruce McConnel is the General Manager of Food Leaders Australia, bringing with him a wealth of experience in agribusiness management. Bruce holds a Bachelor of Agribusiness and Diploma of Export Management, and has spent the last 17 years in a range of roles across the Australian finance industry.

Before joining FLA, Bruce was Regional Manager (South West Queensland, Regional and Agribusiness Banking) for the Commonwealth Bank of Australia, and a driver of business growth across the Toowoomba and Surat Basin region.

Bruce has expertise in beef, horticulture, grains and cotton industries and their respective supply chains and export markets. Through his previous roles he has experience in Domestic and International Trade and led the Queensland agribusiness growth strategy for Commbank. He also spent time with the National Australia Bank, including working as their Agribusiness Strategy Advisor.

Bruce brings with him an extensive client base, expertise in business development, innovation and growth, and a broad knowledge of export.



Cr Paul McVeigh

Mayor, Western Downs Regional Council

Having lived on the Western Downs for 52 years, Councillor Paul McVeigh brings a sense of pride and positivity to his first term as Mayor and is determined to build a legacy that our future generations will prosper from.

Coupled with his credentials in agriculture, which include family properties at Nandi, Warra and Bowenville, and his previous role as a Director of Cotton Seed Distributors, Cr McVeigh has also proven himself to be lateral thinking and successful in business, a skillset he widely uses in his role as Mayor.

Committed to leading a progressive and high performing Council team, he stands by his platform of People, Progress and Performance.

His areas of interest include agricultural development, water rights and fostering community spirit by being a positive and proactive voice for the people of the Western Downs.



Ross Musgrove

Chief Executive Officer, Western Downs Regional Council

Ross Musgrove has been the Chief Executive Officer at the Western Downs Regional Council since mid-2015 and in this short time has injected a renewed confidence in the organisation and its people to be the best Local Government in Queensland.

Clocking an impressive list of achievements for Council as CEO, Ross was named the 2017 Manager of the Year by the Local Government Managers Queensland in recognition of his leadership and management excellence.

Ross spent nine years as a union official and subsequently went on to hold senior positions in the Queensland Government, where he drove reform and productivity across the public sector.

Ross has served as Deputy Commissioner of the Queensland Public Service Commission, Clerk of the Executive Council and on the Council for the Order of Australia.

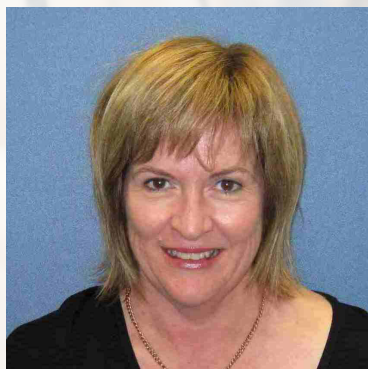
SPEAKERS



Andrew Chamberlin

Project Manager, Queensland Farmers' Federation

Andrew is managing The Energy Savers Program for the Queensland Farmers' Federation, advising the Queensland Government on renewable energy and was recently an advisor to the CCIQ's ecoBiz program and the Project Manager, District Cooling for CitySmart. Andrew has a Bachelor of Science, a Masters in Urban and Regional Planning and is a Certified Measurement and Verification Professional (CMVP).



Jenelle Choice

Director of Training - Darling Downs and South West Region, Department of Employment, Small Business and Training

Jenelle is the Director of Training DDSW Region in the Department of Employment, Small Business and Training and has been in this role for approximately 3 years.

Jenelle has lived on the Darling Downs since 1989, and has actively worked for 25 years in the vocational education and training industry. Jenelle has experienced firsthand the benefits of undertaking an apprenticeship, managing businesses, owning her own business, and returning to university later in her career to complete a Bachelor of Education. Jenelle went on to teach her trade and subsequently progressed to Executive Director of a large training organisation.

Jenelle is a strong advocate for the Vocational Education and Training System. She demonstrates a strong commitment and enthusiasm in supporting individuals and employers to continually improve their business outcomes and career opportunities through a vocational education pathway.

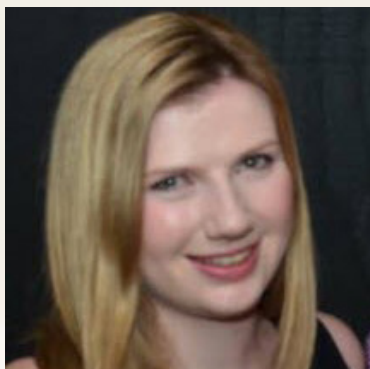


Tim Ford

Managing Director, Feed Central

Tim established Feed Central in 2002 and is the current Managing Director. Tim has extensive farming and small business experience in Southern NSW, Victoria, Northern NSW and Queensland. He has worked at a professional level of marketing hay and agricultural produce both domestically and internationally for over 20 years. Born and bred in the Riverina, Tim completed part of his secondary education in Melbourne, some in Western Queensland and then in Brisbane, before attending the University of Queensland (Gatton) to study a Bachelor of Business (Agribusiness). Tim's career motivation is to ensure that Grain and Fodder Industries produces product that meets our customers expectations and to ensure that there are commercial, market based mechanisms to benchmark, differentiate and reward quality product/ion. Under Tim's leadership Feed Central continually stretches the boundaries in measuring and monitoring hay and grain quality using both traditional visual and modern scientific techniques. Feed Central brings together the supply and quality parameters into a modern and vibrant, simple marketing platform at www.feedcentral.com.au supported by a highly skilled and qualified team.

SPEAKERS



Stacey Kirkwood

Customer Advisor, WorkCover Queensland

Stacey Kirkwood is a Customer Advisor at WorkCover Queensland. Working in the manufacturing industry for medium to large sized employers, Stacey has had several years of experience in claims assessment, case management and premium matters.

She recently graduated from Queensland University of Technology with a Bachelor of Business (Human Resource Management) and Bachelor of Communication, and has a strong focus on providing return to work solutions, support and education for customers and stakeholders.



Geoff Marsh

Director - Business Development, March IT

Geoff is visionary, passionate and innovative and has been responsible for March IT's growth since its inception. He has developed a strong track record of designing innovative solutions for clients' telecommunications requirements in difficult and remote areas for over 13 years.

March IT are the experts in regional and remote telecommunications. Their services provide the means to which businesses can harness innovation and utilise emerging technologies. By using their skills and experience in providing remote telecommunications you now have access to increased productivity, safety, certainty and profitability.



Ian McConnel

Global Commodity Lead - Beef, WWF

Ian is WWF's Global Expert on Livestock and a globally recognised expert on Animal Production Systems. A 5th generation beef producer, Ian gained a Bachelor of Science in Animal Studies at the University of Queensland and then spent a year at Colorado State University supporting meat science and genetics research. He joined the Queensland government extension service in 2003 as a sheep and cattle extension officer in remote western Queensland and then continued in south east Queensland. Ian pioneered innovative extension and outreach tools in remote Australia and led the trialling and development of remote animal management systems.

After joining WWF-Australia in 2012 to lead their Australian Beef industry engagement and rising to take on the global lead for beef in 2014. In this role, Ian is an executive board member of the Global Roundtable for Sustainable Beef and actively involved in efforts to improve the economic, social and environmental impacts of livestock production in 15 countries. His work includes developing markets for sustainably produced beef, research and extension projects, policy development and consumer facing education.

SPEAKERS



Bernadette McCabe

Principal Scientist, University of Southern Queensland

A/Prof Bernadette McCabe is a principal scientist with the National Centre for Engineering in Agriculture at the University of Southern Queensland. Bernadette is an Advance Queensland Mid-Career Research Fellow working in partnership with NH Foods Australia, Oakey Beef Exports. She has expertise in the monitoring of wastewater, biogas production and assessment of biosolids as fertiliser replacement.

Bernadette collaborates at an international level as National Team Leader representing Australia in the International Energy Agency (IEA) Bioenergy program Task 37: Energy from Biogas. IEA Task 37 is an international working group made up of 13 member countries that exchange global best practice trends in biogas production. Through this role she has established a wide network of national and international research, industry and government contacts.

Bernadette has also been active in the scholarship of bioscience learning and teaching and was awarded a 2011 Australian Learning and Teaching Council (ALTC) citation for outstanding contributions to student learning. She is also committed to promoting science in schools and has been involved in ongoing school partnerships through CSIRO's STEM Professionals in Schools program since 2007.



Elton Miller

Executive Director, Rural Economic Development, Queensland Department of Agriculture and Fisheries

Elton has over 25 years of public sector experience at both the State and Commonwealth level in Australia, across a range of economic research and policy roles and joined the Queensland Department of Agriculture and Fisheries in 2005. Elton's current responsibilities include leading the Department's trade and investment facilitation and regional industry development capability. This also involves working closely with Trade and Investment Queensland. Elton has a Bachelor of Agricultural Economics with first class honours from the University of New England, Australia.



Aleacia Olm

Sector Leader Major Projects [Agriculture | Civil], RMA Engineers

Aleacia is a principal engineer and the sector leader for major agriculture and civil projects at RMA Engineers.

Aleacia's key focus and passion is providing turn key solutions for major Agricultural projects including holistic farm planning, project planning, multi-disciplinary design and construction.

There are strong commercial drivers for these projects, and success is dependant on the successful integration of civil, structural, geotechnical, hydraulic, electrical/mechanical, traffic and transport engineering right through from project conception to final construction.

Aleacia works closely with clients to deliver value for money project solutions exceeding the client's commercial and business objectives.

SPEAKERS



Travis Tobin

CEO, Queensland Farmers' Federation

Travis Tobin was appointed Chief Executive Officer of QFF in June 2016. Prior to this role, Travis was an Adviser and Departmental Liaison Officer in the Office of the Deputy Prime Minister.

From a sheep and cattle farming family in the western division of NSW, Travis has spent his career across a broad range of agricultural roles in the public and private sectors. He was the Director of food export programs and led policy development in the Australian Government Department of Agriculture and Water Resources. In a senior leadership role in the rice industry, Travis reformed the extension services system during a time of major change in the industry. He has worked in agribusiness banking across NSW, Victoria and SA, and held senior roles in the drilling industry managing contracts Australia wide.

Travis has formal qualifications in agriculture, business administration and project management. He is a graduate member of the Australian Institute of Company Directors.



Jodie Taylor

Community & Liveability General Manager, Western Downs Regional Council

Jodie Taylor has over 20 years of experience in a diverse range of roles within local government. Her qualifications include a Diploma of Management and Diploma of Project Management.

As the General Manager of Community & Liveability departments, Jodie is committed to leading strong tourism and events, resourceful council, community and cultural development, economic development and high standards in planning and environment.

Jodie aims to develop a high performing, customer focused team, committed to delivering quality services that will enhance the development and liveability of our region.



Dr Peter Watts

Principal Agricultural Engineer, Premise

Peter is a Principal Consultant with over 30 years of professional experience in Agricultural Engineering. His specialty lies in intensive livestock and irrigation situations. In 1994 Peter co-founded Feedlot Services Australia (FSA) and has since produced the MLA Feedlot Design Manual and was winner of the Elanco Award for Outstanding Service to the Australian Lot Feeding Industry.

His extensive field of work covers irrigation system design including hydrological modelling, design of ring tanks, water use efficiency audits, land and water management plans, design plans, and outlining related specifications. His team also addresses the design and environmental management of facilities producing organic effluents, including livestock industries, abattoirs, and similar industries.

NOTES



NOTES



NOTES



WESTERN DOWNS IS OPEN FOR BUSINESS

2ND LARGEST SALE YARDS IN AUSTRALIA

EXPANDING AGRICULTURE

ACTIVE & VIBRANT TOWN CENTRES

AUSTRALIA'S MOST MODERN PLANNING SCHEME ALLOWING FOR UP TO 6 STOREYS

HOME OF AUSTRALIA'S FIRST GRAIN TO ETHANOL FACILITY

14.4% GROWTH IN AGRICULTURE

5.0% UNEMPLOYMENT RATE**

LOWEST IN REGIONAL QUEENSLAND

**23 PIGGERIES | 229K PIGS
68 FEEDLOTS | 265K CATTLE ON FEED**

GRP \$2.7 BILLION*

POPULATION 34,197*

\$894M VALUE OF AGRICULTURE
48% LIVESTOCK
49% BROADACRE CROPPING

ENERGY CAPITAL OF QUEENSLAND™

ROUNDED AND DIVERSE ECONOMY

HOME OF THE DRONES

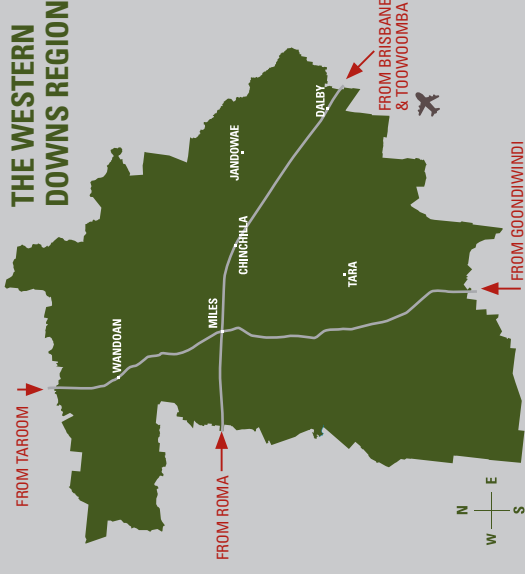
10 NEW SOLAR FARMS = 3,000 NEW JOBS

**WESTERN DOWNS REGIONAL COUNCIL HAS IMPLEMENTED ONE OF OLD'S MOST MODERN & PROGRESSIVE PLANNING SCHEMES
INCREASED CERTAINTY + REDUCED RISK + SHORTENED TIMELINES = GREATER INVESTOR CONFIDENCE**

WDRC IS A COUNCIL COMMITTED TO ENABLING ECONOMIC GROWTH

- NEW PLANNING SCHEME MAKES INVESTMENT SIMPLE
- A PRAGMATIC APPROACH TO ASSESSMENT
- HIGHLY COMPETITIVE APPLICATION FEES
- SUPPORT THROUGH THE PROCESS

THE WESTERN DOWNS REGION



We'll be the first rest stop, west of Brisbane when the Toowoomba bypass is completed

"THE OPPORTUNITIES FOR THE AGRICULTURE SECTOR IN GENERAL ARE TREMENDOUS. AUSTRALIA HAS WORLD-CLASS FARMERS, WORLD'S BEST PRACTICES AND WORLD RENOWNED CLEAN ENVIRONMENTAL CREDENTIALS. YOU TAKE ALL OF THESE ATTRIBUTES, COMBINE THEM WITH THE PRIME FARMING LAND THAT NATURE HAS GIFTED US IN THE WESTERN DOWNS AND YOU ARE STARTING WITH A VERY STRONG POSITION."

**ANDREW RUSHFORD
GM OF STANBROKE FEEDLOT OPERATIONS**

For more information and to discuss how we can assist, please contact:
Council's Economic Development Department 1300 COUNCIL 07 4679 4000

WESTERN DOWNS REGIONAL COUNCIL

INFORMATION IS THE LATEST AVAILABLE AT TIME OF PRINT
*FIGURES FOR WESTERN DOWNS LGA
**FIGURES FOR DARLING DOWNS - MARANDBA