



Coopers Gap Wind Farm – AGL Energy

The Coopers Gap Wind Farm is expected to have a capacity of up to 460MW. The site is located 50km south-west of Kingaroy and could be adding electricity to Queensland's power grid by 2020.

The site will be located on 10 properties near Cooranga North between Dalby and Kingaroy on land which is predominately used for cattle grazing and other farming activities. The wind farm is planned to be connected to a new Powerlink substation along the new Western Downs to Halys 275kV transmission line.

AGL's Coopers Gap Wind Farm Construction Project Manager, Tim Knill said "Coopers Gap Wind Farm remains AGL's foremost renewable energy project in Queensland with a high quality wind resource and possibly the highest average wind speeds in the state."

In March 2017, Queensland's independent Coordinator-General

AGL has advised it will employ local people and use local contractors from across the Wide Bay Burnett and Darling Downs wherever possible. This project will contribute up to \$4 million each year to the local economy.

Dr Anthony Lynham
Minster for State
Development, Natural
Resources and Mines

approved AGL Energy Limited's environmental impact statement for its Coopers Gap Wind Farm.

Minster for State Development, Natural Resources and Mines Anthony Lynham announced the approval, saying the project could contribute up to \$4 million each year to the local economy.

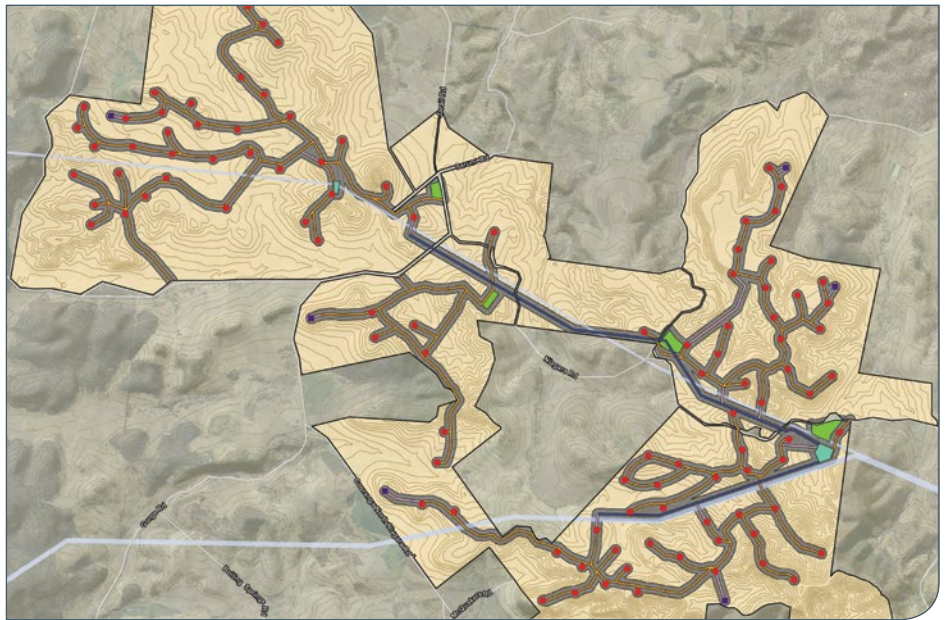
The project will create up to 350 construction jobs and up to 20 permanent jobs once operation starts in 2020.¹



Explore Coopers Gap Wind Farm
– AGL Energy

¹ <https://www.statedevelopment.qld.gov.au/assessments-and-approvals/coopers-gap-wind-farm.html>





Source: AGL Project map current at 2014. AGL continues to update the project footprint and location as they progress to project announcement.

Project fast facts

- AGL currently builds, owns, and operates large wind farms in South Australia and Victoria.
- The project is located close to Bell, between Kingaroy in the South Burnett Regional Council area and Dalby, in the Western Downs Regional Council area.
- Although the project footprint is approximately 13,200 hectares of freehold agricultural land, the wind towers and associated infrastructure uses less than 2% of the area.
- The wind farm has the potential to supply power to about 240,000 households and greenhouse gas reductions are equivalent to removing 320,000 cars off the road.
- The project will be developed through an EPC model, where a lead or prime contractor caretake Engineering, Procurement and Construction under a contract.
- The lead contractor will likely venture with a main construction company to develop the site ready for the towers and turbines. Sub-contractor and local business opportunities exist with the construction company.
- The electricity generated from each turbine will be transmitted via underground cabling to the on-site substation. The substation will connect directly into the grid network on site, and onto the power network.
- The project is valued at more than \$500 million, with up to 115 wind turbines. It is set to become Queensland's largest wind farm.
- The tender process will continue until we reach financial close on the project, which we hope will be in the second half of this year. At that point we will award the contract to the successful tenderer.

“ It is hoped the Coopers Gap Wind Farm will be the next greenfield renewable development offered to the Powering Australian Renewables Fund (PARF). The PARF is a partnership between AGL, QIC and Future Fund, which is targeting the development of approximately 1,000MW of large-scale renewable energy projects.

**AGL's Coopers Gap Wind Farm Project Manager,
Evan Carless**

”



Get involved

TSBE has a number of services available to assist members with information regarding the local project. To enquire, or become a TSBE member please contact TSBE Supply Chain General Manager Reagan Parle on (07) 4639 4600.



tsbe.com.au